



## Cary Eugene Waddle

December 3, 1943 - November 27, 2016

Cary Eugene Waddle, 72 years, 11 months, and 24 days, lifelong Okmulgee resident, passed away Sunday, November 27, 2016 at his home. Cary was born December 3, 1943 to the late Jess Alexander and Mary Margelia (Harshaw) Waddle. He married Doris Rehbein on October 14, 1971 in Van Buren, Arkansas. Cary worked for many years as a concrete plant manager and mechanic. He loved working on hot rods and building cars, but his greatest love was his wife and family. He was preceded in death by his parents, and siblings, Louise Hammon, Bill Waddle, Bob Waddle, Pat Taft, Juanita Palmieri and Margie Wyers. Survivors include his wife, Doris of the home, three sons, Mike Waddle and wife Charlotte of Roland, Oklahoma, Tom Waddle and wife Michelle of Coffeyville, Kansas, and Jerry Waddle of Okmulgee, a sister, Elouise Belcher of Muskogee, seven grandchildren and nine great grandchildren. He is also survived by numerous nieces, nephews, and dear friends.

A memorial service will be held 10:00 A.M. Friday, December 2, 2016 at the McClendon-Winters Funeral Home Chapel of Okmulgee with Pastor Jimmy Foreman and Mike Waddle officiating.

Arrangements and cremation services have been entrusted to the McClendon-Winters Funeral Home of Okmulgee

Memories, condolences, photos and videos may be shared with the family on Cary's Tribute Page of our website at [www.mcclendon-winters.com](http://www.mcclendon-winters.com)

# Previous Events

## Memorial Service

DEC 2. 10:00 AM (CT)

McClendon-Winters Funeral Home Chapel  
303 E. 7th Street  
Okmulgee, OK

# Tribute Wall



“ *McClendon-Winters Funeral Home created a Webcast in memory of Cary Eugene Waddle*



---

**McClendon-Winters Funeral Home** - December 02, 2016 at 10:00 AM



“ *Cary Eugene Waddle*

---

December 20, 2022 at 11:29 AM



“ *Linda Gray lit a candle in memory of Cary Eugene Waddle*



---

**Linda Gray** - February 09, 2017 at 09:15 PM

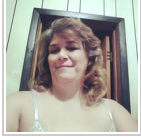


“ *Janette Johnson lit a candle in memory of Cary Eugene Waddle*



---

**Janette Johnson** - December 02, 2016 at 01:36 PM



“ 1 file added to the tribute wall



---

**Michelle Waddle** - November 29, 2016 at 10:35 AM



“ *Kim Angle lit a candle in memory of Cary Eugene Waddle*



---

**Kim Angle** - November 29, 2016 at 08:29 AM